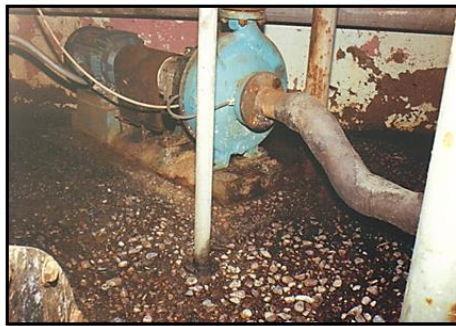


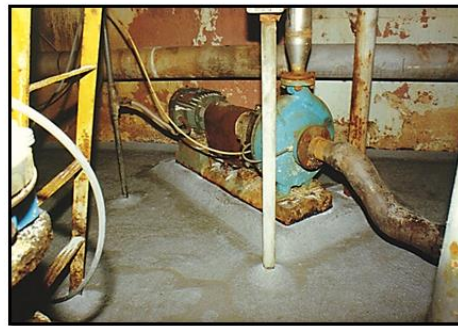


Case Study: Bleach Plant

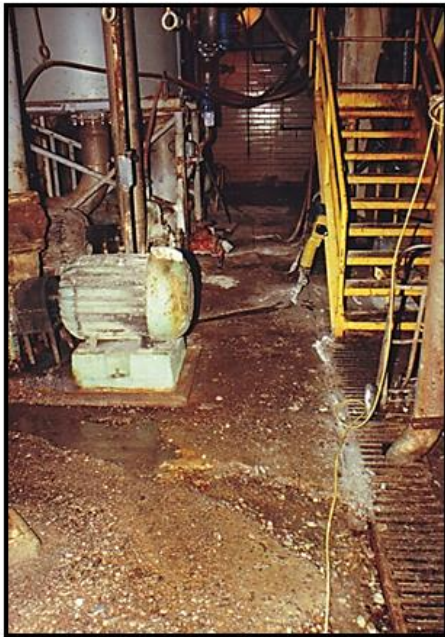
Areas of a pulp & paper bleach plant floor and pump bases were suffering severe erosion from calcium hypochlorite, caustic, and sulphuric acid. Trenches had been cut by the chemical attack, and in some areas the concrete was reduced to loose gravel. 5500 Grout was used to fill eroded areas, and correct the pitch of the floor. 6000 VS was installed to rebuild vertical surfaces of pump bases that had eroded. 6000 FS was then applied to the floor. The 6000 Series provides a seamless, non-porous surface that resists attack from the severe conditions in the bleach plant.



Before



After



Before



After