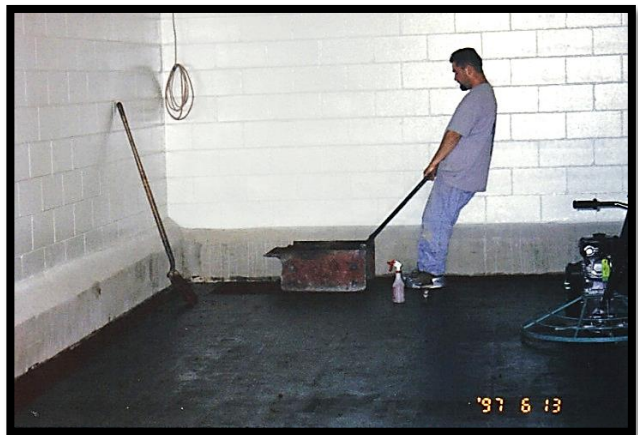




Case Study: Food Processing Plant- Service Hallways

A Meat Processing company was required by U. S. D. A. to install an epoxy topping to a hallway connecting coolers and production areas due to concrete deterioration. Over time, chemical wash downs and heavy forklift traffic caused aggregate to be exposed. The concrete surface was shotblasted to remove surface contaminants and to provide the proper bonding profile. **3300 FS** epoxy mortar with primer was power troweled at a thickness of ¼" (6mm). The 2,500 ft.² (250 m²) project was completed in 2 days.



The sealed finished of the **3300 FS** has eliminated the standing water in the spalled concrete where the potential for bacteria growth existed. Wear from forklift traffic has also been greatly reduced. The **3300 FS** has been in service for 7 years and has required no additional maintenance.

